



**Pacific Gas and
Electric Company**

FILED
OFFICE OF THE
SECRETARY

Power Generation

245 Market Street
San Francisco, CA 94105

Mailing Address
Mail Code N11C
P.O. Box 770000
San Francisco, CA 94177

2004 JUN 14 P 4:49

RECEIVED BY
COMMISSION

June 11, 2004

ORIGINAL

Ms. Magalie Roman Salas,
FERC Office of the Secretary
888 First Street, N.E.,
Washington, DC 20426-0002

**Upper North Fork Feather River Project (FERC No. 2105)
Revised Public Safety Plan**

Dear Secretary Salas:

This letter provides a revised Public Safety Plan for the Upper North Fork Feather River Project (FERC No. 2105). This revision was prepared in consultation with Plumas County and incorporates the natural hazard and informational marker buoys that the Pacific Gas and Electric Company (the Company) provides and maintains during the recreation season on Lake Almanor and Butt Valley Reservoir.

If you have any questions, please call me at (415) 973-1646.

Sincerely,

Bill Zemke
Senior License Coordinator

Original and eight copies to FERC
Attachments

Ms. Magalie Roman Salas
June 11, 2004
Page 2

cc: Mr. Takeshi Yamashita, Regional Engineer
Federal Energy Regulatory Commission
901 Market Street, Suite 350
San Francisco, CA 94103-1778

Attachment

Revised – May, 2004

**SAFETY DEVICES
FERC PROJECT 2105
UPPER NORTH FORK FEATHER RIVER PROJECT**

1. **FENCING**

- A. Six-foot high chain-link security fencing with barbed wire at the top mounted on outrigger arms.
- B. Locked gates on dam access roads.

2. **LIGHTING**

General illumination lighting for security and work area needs.

3. **HANDRAILS**

Metal safety railings with top and midrails.

4. **BOATING SAFETY BARRIERS**

- A. Foam-filled cylindrical plastic floats 10' c-c with high-visibility cable threaded through the floats and suspended approximately 6" above the water surface. Installed across Butt Valley PH tailrace 1/8 mile downstream of the powerhouse.
- B. Barrier described in A is installed approximately 400' upstream of the spillway on Butt Valley Reservoir. Buoys attached to barrier at 100'-125' centers with "DANGER – DAM" text..
- C. Barrier as described in A is installed in front of the powerhouse intake at Lake Almanor.
- D. Foam-filled spherical floats 16" dis. 10' c-c with high-visibility cable threaded through them located approximately 300' upstream of the fish barrier on North Fork Feather River.
- E. Barrier as described in A is installed between the outlet tower at Canyon Dam and the Dam

5. **DEBRIS BOOMS**

Floating barriers to divert debris. 12" dia. X 20' foam-filled pipe barrier across the channel to the Caribou No. 2 intake. Vertical Buoys 20' upstream of debris barrier 15' c-c with "KEEP OUT" text.

Revised – May, 2004

6. SIGNS

- A. Various signs in dam areas: “DANGER - DO NOT ENTER THIS WATERWAY - UNUSUAL NATURAL AND ARTIFICIAL BARRIERS AHEAD ABOVE AND BELOW WATER SURFACE (WHIRLPOOLS - UNDERCURRENTS - SUBMERGED CONDUITS - STRUCTURES - SPILLWAYS - TUNNELS - SOLID BARRIERS) - KEEP OUT - PACIFIC HAS AND ELECTRIC COMPANY”, “NOTICE - PRIVATE PROPERTY - ENTER AT OWN RISK”, “NOTICE - PRIVATE PROPERTY - DO NOT ENTER”, and “DANGER - SPILLWAY - KEEP AWAY”.
- B. Various signs in powerhouse tailrace area as appropriate: “DANGER - WATER MAY BE DISCHARGED IN THIS AREA AT ANY INSTANT - IT IS EXTREMELY DANGEROUS - KEEP AWAY - PACIFIC GAS AND ELECTRIC CO.” and “WARNING - WATER MAY BE DISCHARGED FROM THE POWERHOUSE IN THIS AREA AT ANY INSTANT - IT IS EXTREMELY DANGEROUS - KEEP AWAY - PACIFIC GAS AND ELECTRIC CO.”.
- C. Warning signs at Water Hazard Barrier upstream of Gansner Bar Fish Barrier Dam: “DANGER – WATER HAZARD BEYOND THIS POINT”.
- D. Reservoir Area (various locations): “DANGER - KEEP OFF LAKE - UNSTABLE ICE AND SNOW.” (Eight signs located around Lake Almanor and Butt Valley Reservoir). These signs are in place during the winter season, generally from November to April or May.
- E. Warning Signs are various public recreation access points on Lake Almanor and Butt Valley Reservoir: “THE WATER LEVEL IN THIS LAKE CHANGES AS A RESULT OF ELECTRIC POWER OPERATIONS. USERS SHOULD WATCH FOR SHALLOW AREAS AND SUBMERGED OBJECTS. BE CAREFUL AND ENJOY YOURSELF SAFELY” and “CAUTION SUBMERGED ROCKS”

7. SIGNS - POWERHOUSE PERIMETER

Various signs at fences: “NOTICE - PRIVATE PROPERTY - DO NOT ENTER - PACIFIC GAS AND ELECTRIC CO.”, “THIS STATION CONTAINS ELECTRICAL EQUIPMENT - IN THE INTEREST OF SAFETY ONLY AUTHORIZED PERSONS MAY ENTER - PACIFIC GAS AND ELECTRIC CO.”, “DANGER - HIGH VOLTAGE INSIDE - UNAUTHORIZED PERSONS KEEP OUT - PACIFIC GAS AND ELECTRIC CO.”, “DANGER - HIGH VOLTAGE - KEEP OUT”, “DANGER - HIGH VOLTAGE - UNAUTHORIZED PERSONS KEEP OUT - PACIFIC GAS AND ELECTRIC CO.”, and “DANGER - HIGH VOLTAGE”.

Revised – May, 2004

8. NATURAL HAZARD AND INFORMATION BUOYS

White cylindrical buoys marking known natural hazards and providing other safety information on Lake Almanor and Butt Valley Reservoir during the recreation season. The placement of these buoys are generally as described below:

Lake Almanor

1. Tip of Peninsula, 1 – 8 buoys, depending on reservoir level.
2. Lassen View Resort, near Hamilton Branch Boat Ramp, 1 buoy.
3. Bird Rock, along the east shore near stumpy beach, 1 buoy.
4. Lake Almanor Campground, 0 – 4 buoys, depending upon reservoir level.
5. Fox Point, 1 – 2 buoys, depending upon reservoir level.
6. Fox Island, 3 - 8 buoys, depending upon reservoir level.
7. Goose Island, 1 – 8 buoys, depending upon reservoir level.
8. Lake Almanor West Country Club at the point, 0 – 1 buoy, depending upon reservoir level.
9. Jet Ski Cove Island, 1 buoy.
10. North Shore Island, 3 – 7 buoys, depending upon reservoir level, to be place along the west side of the island.
11. Canyon Dam Boat Ramp, 3 speed limit buoys

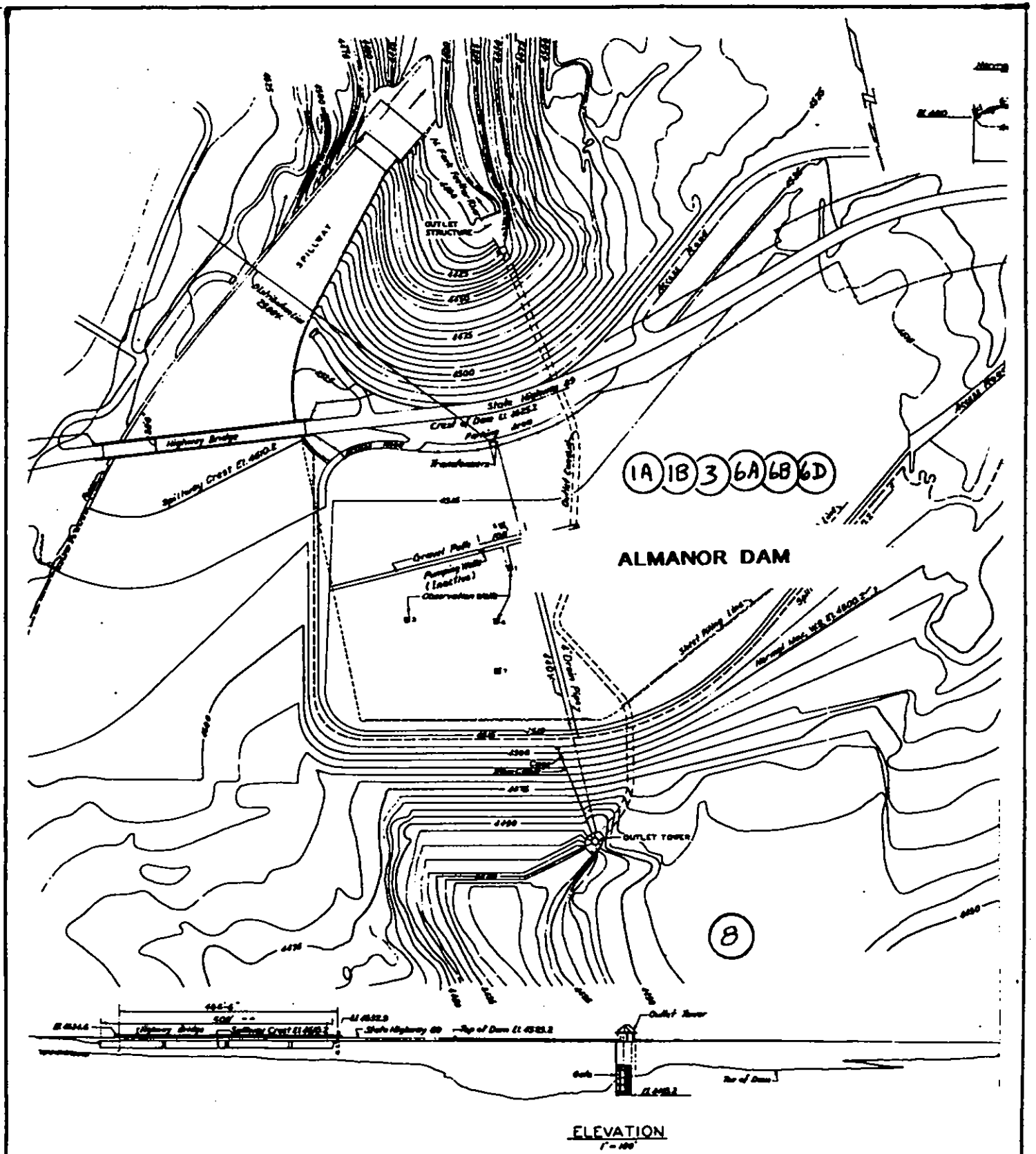
Butt Valley Reservoir

1. Lower portion of lake, 14 speed limit/warning buoys
2. Above Alder Creek Boat Ramp, 11 - 14 speed limit/warning buoys
3. Ponderosa Campground, 2 – 3 buoys

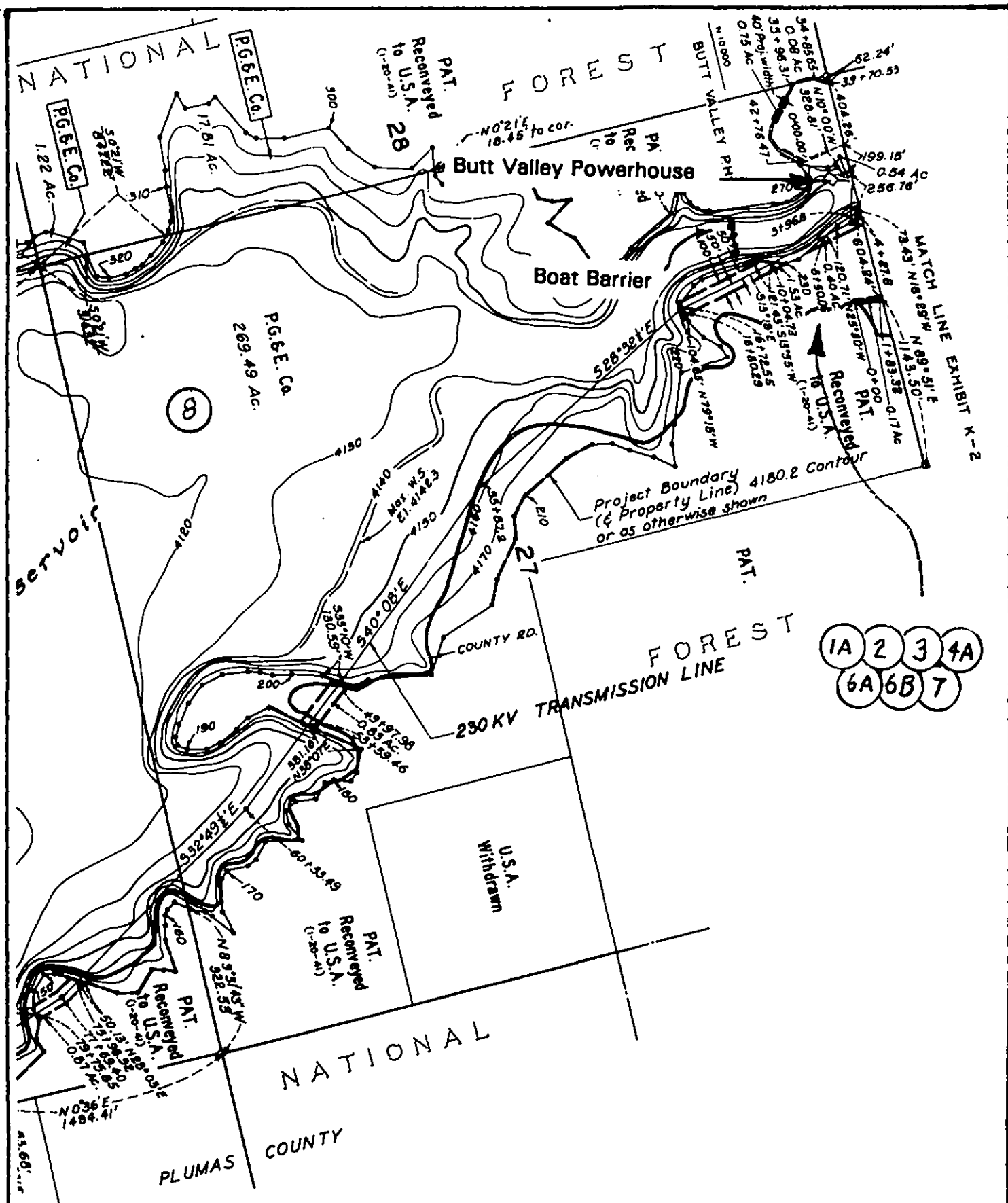
Revised – May, 2004

AREA DRAWINGS (attached)

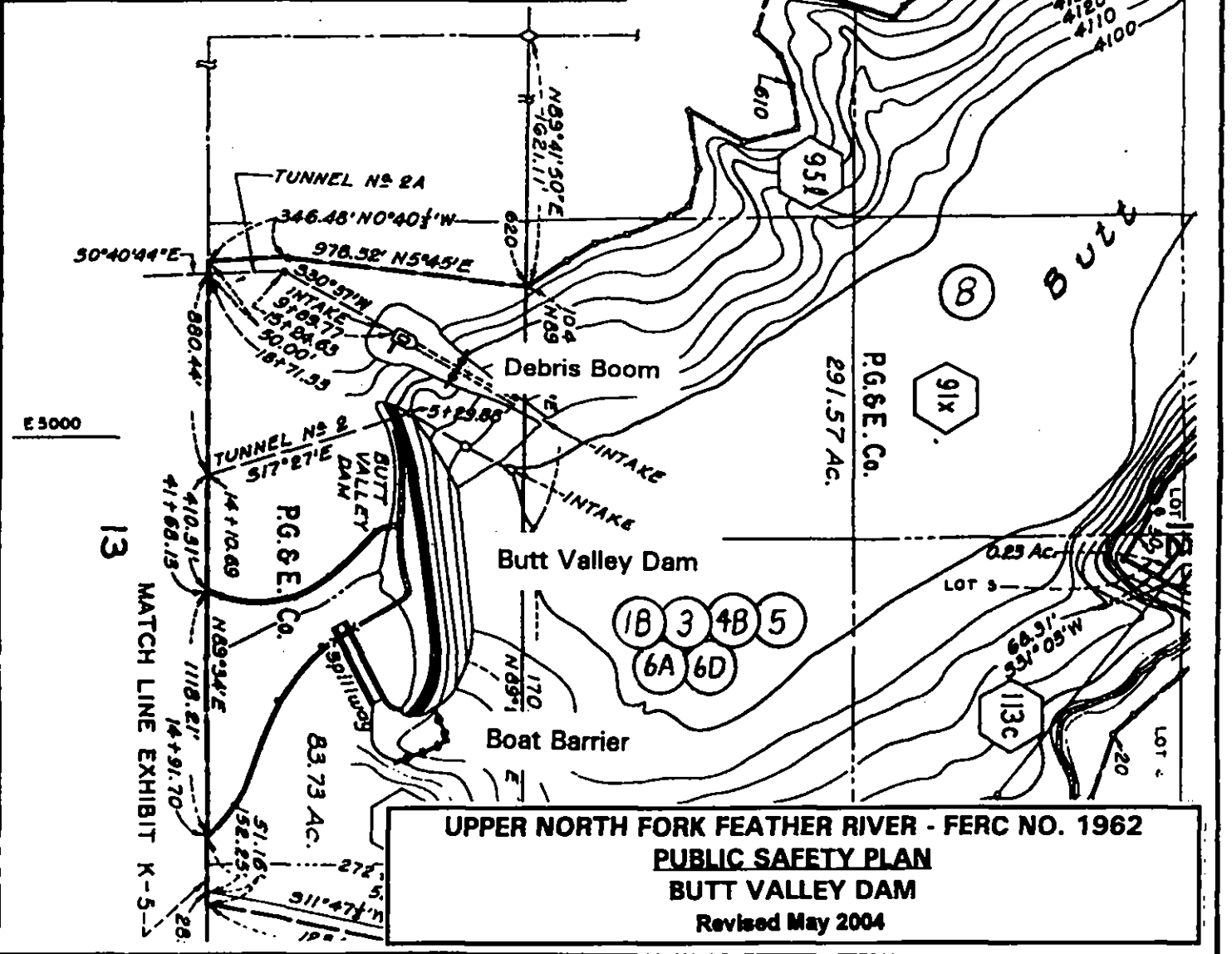
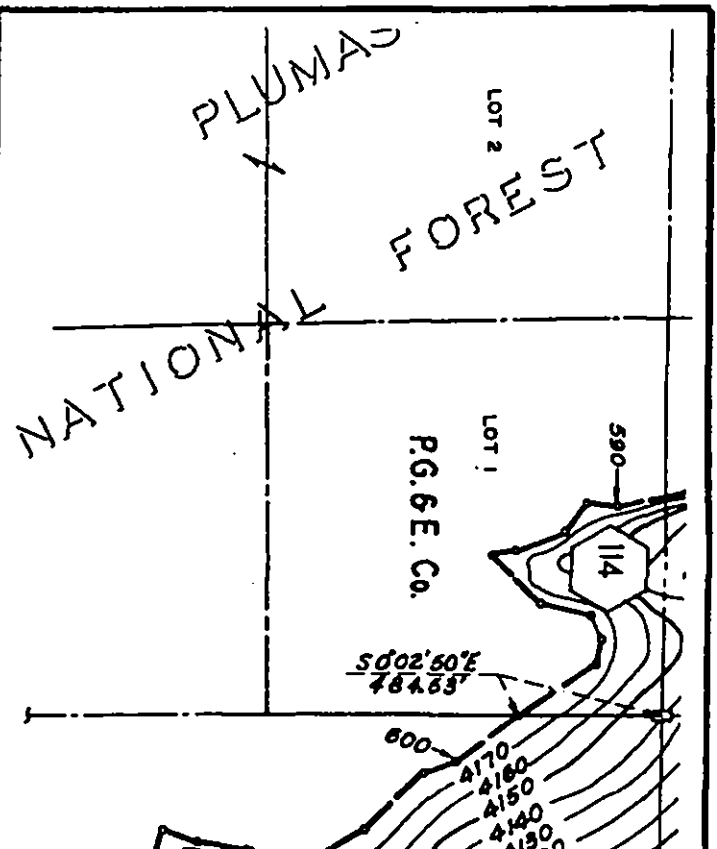
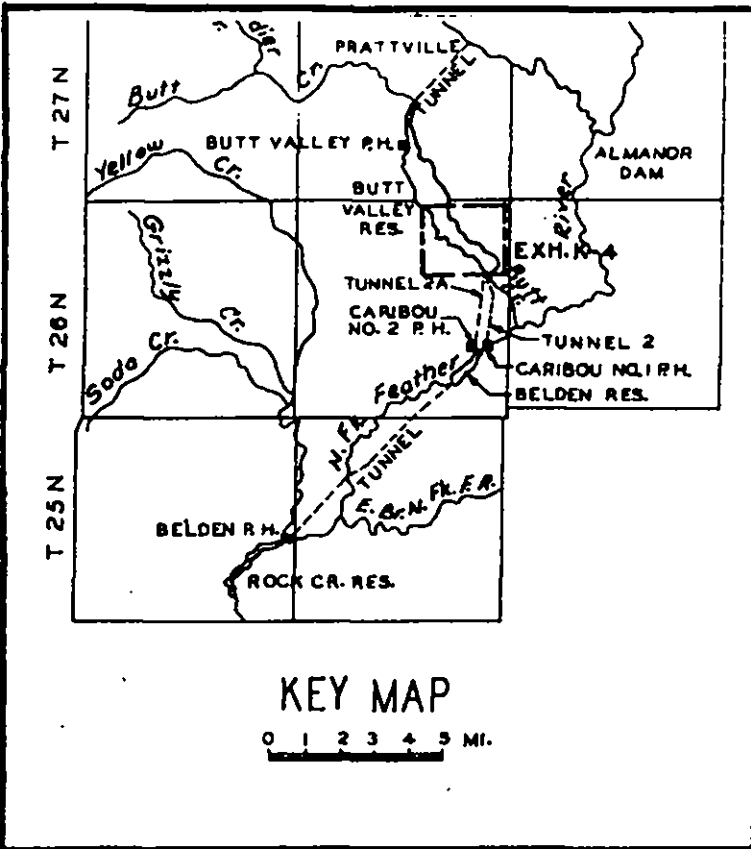
Lake Almanor
Prattville Intake
Butt Valley Powerhouse
Butt Valley Dam
Gansner Bar Fish Barrier Dam
Caribou Powerhouse
Belden Dam and Oak Flat Powerhouse
Belden Powerhouse



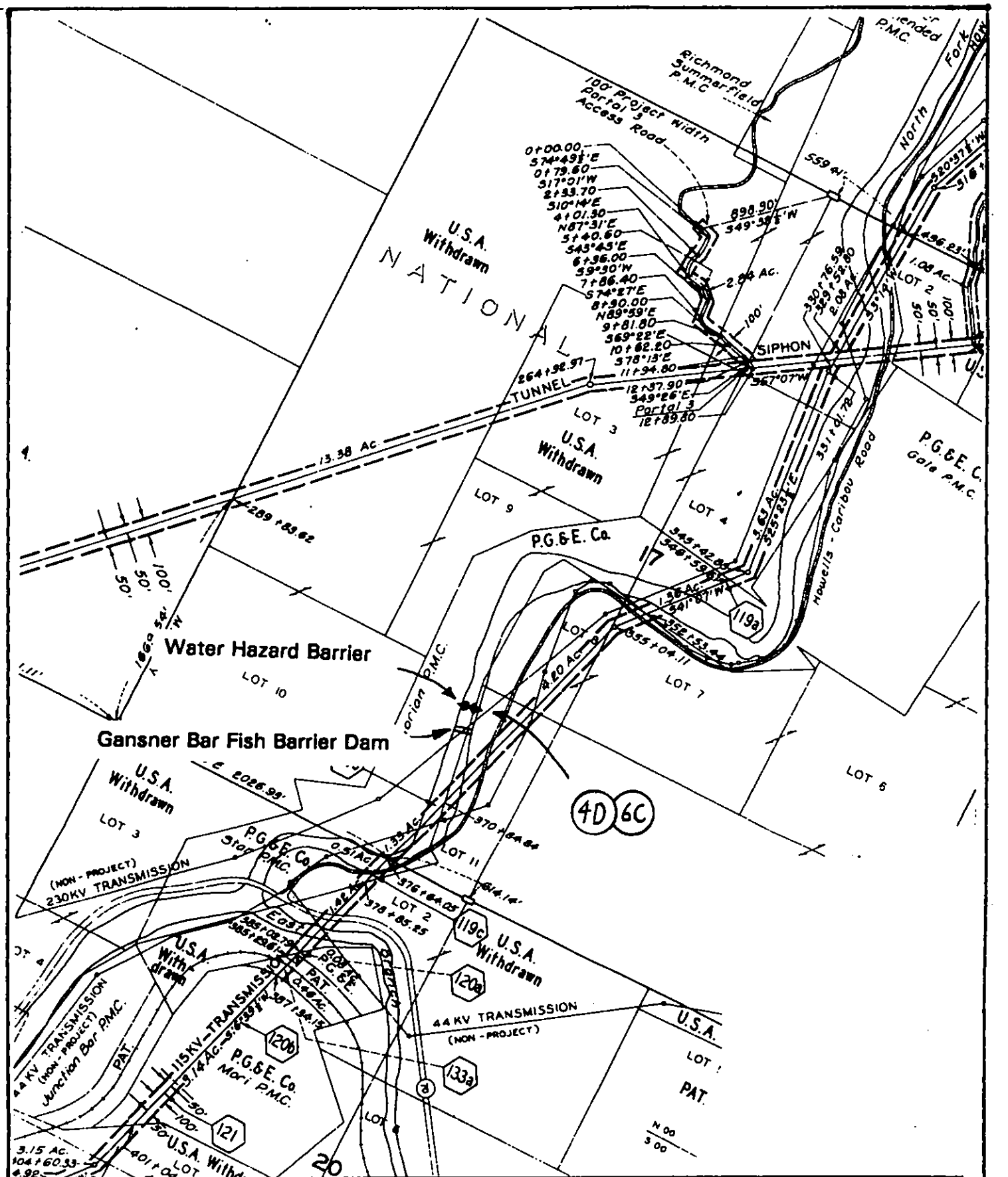
UPPER NORTH FORK FEATHER RIVER - FERC NO. 1962
PUBLIC SAFETY PLAN
LAKE ALMANOR DAM
 Revised May 2004



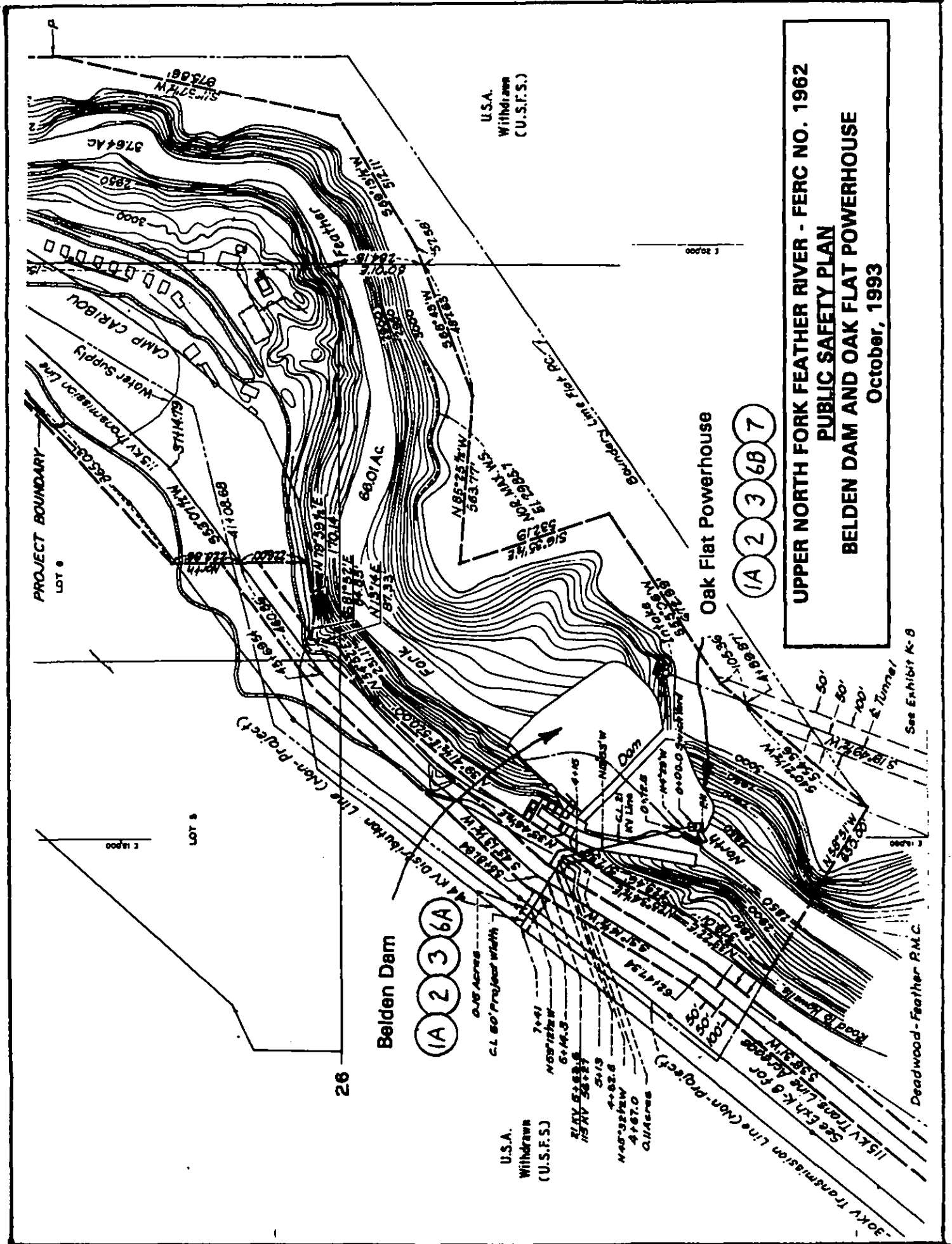
UPPER NORTH FORK FEATHER RIVER - FERC NO. 1962
PUBLIC SAFETY PLAN
BUTT VALLEY POWERHOUSE
 Revised May 2004



**UPPER NORTH FORK FEATHER RIVER - FERC NO. 1962
PUBLIC SAFETY PLAN
BUTT VALLEY DAM
Revised May 2004**



UPPER NORTH FORK FEATHER RIVER - FERC NO. 1962
PUBLIC SAFETY PLAN
GANSNER BAR FISH BARRIER DAM
October, 1993



U.S.A.
Withdrawn
(U.S.F.S.)

(A 2 3 6B 7)

UPPER NORTH FORK FEATHER RIVER - FERC NO. 1962
PUBLIC SAFETY PLAN
BELDEN DAM AND OAK FLAT POWERHOUSE
October, 1993

(A 2 3 6A)

Belden Dam

U.S.A.
Withdrawn
(U.S.F.S.)

See Exhibit K-8

Deadwood-Feather P.M.C.

Oak Flat Powerhouse

PROJECT BOUNDARY
LOT 6

LOT 5

26

1:2000

1:2000

P

S11.37°W 873.88'
S11.37°W 976.44'
2880'
3000'

3764 AC
2880'

3000'

CAMP CARIBOU
Water Supply

15KV Transmission Line

55.07°W 668.01'
N17.39°E 170.14'

68.01 AC

N15.74°E 87.33'
S44.83°E 54.83'

51.10°W 51.10'

51.10°W 51.10'

51.10°W 51.10'

51.10°W 51.10'

51.10°W 51.10'

51.10°W 51.10'

51.10°W 51.10'

51.10°W 51.10'

51.10°W 51.10'

51.10°W 51.10'

15KV Distribution Line (Non-Project)

15KV Feeder Line

15KV Transmission Line

15KV Transmission Line

15KV Transmission Line

15KV Transmission Line

15KV Transmission Line

15KV Transmission Line

15KV Transmission Line

15KV Transmission Line

15KV Transmission Line

15KV Transmission Line

15KV Transmission Line

15KV Transmission Line

15KV Transmission Line

15KV Transmission Line

15KV Transmission Line

15KV Transmission Line

15KV Transmission Line

15KV Transmission Line

15KV Transmission Line

15KV Transmission Line

15KV Transmission Line

15KV Transmission Line

15KV Transmission Line

15KV Transmission Line

15KV Transmission Line

15KV Transmission Line

15KV Transmission Line

15KV Transmission Line

15KV Transmission Line

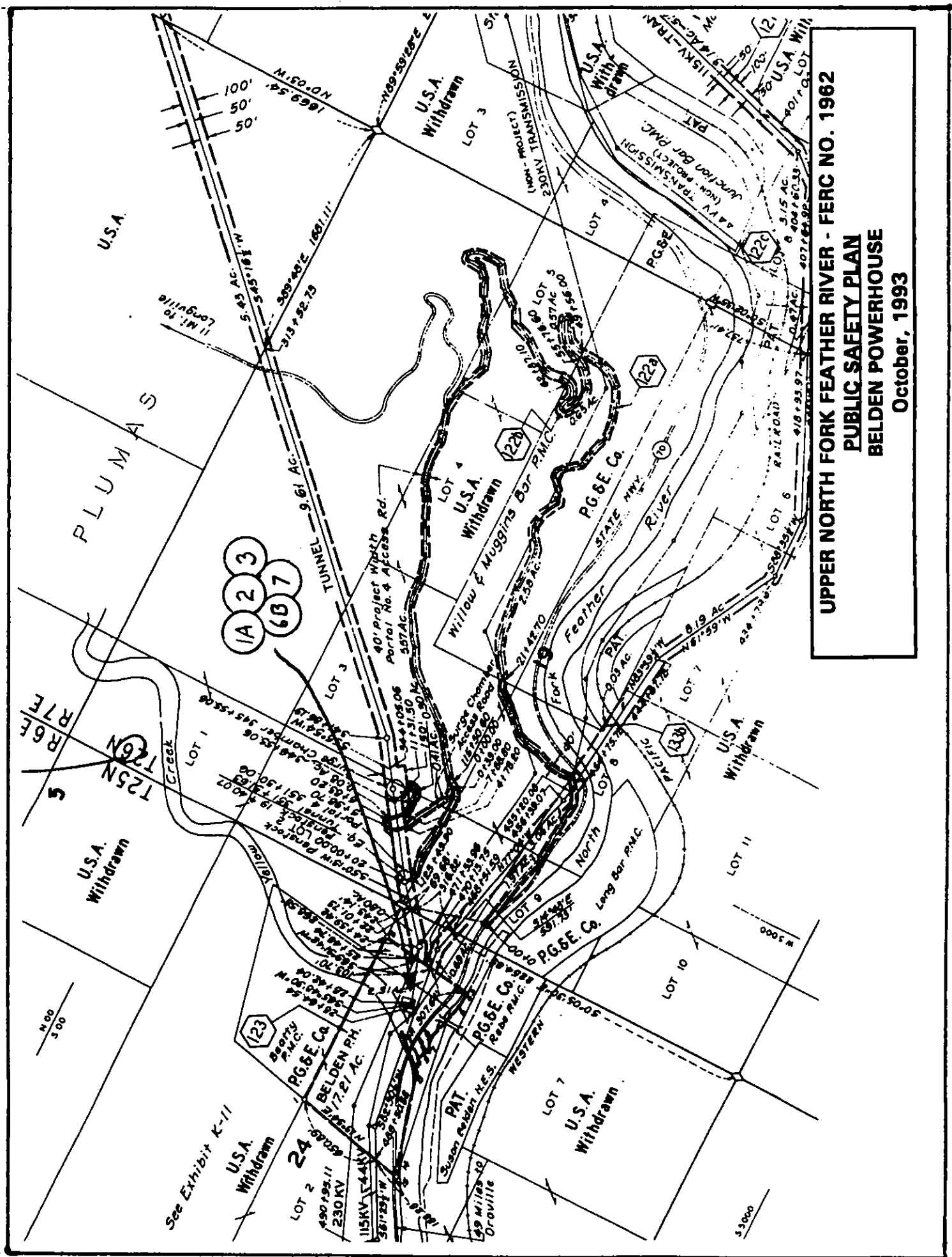
15KV Transmission Line

15KV Transmission Line

15KV Transmission Line

15KV Transmission Line

15KV Transmission Line



UPPER NORTH FORK FEATHER RIVER - FERC NO. 1962
PUBLIC SAFETY PLAN
BELDEN POWERHOUSE
October, 1993